

The checklist below covers the key objectives and tasks required during the site audit to ensure successful planning and execution of the installation. This is intended to be completed by the individual(s) responsible for conducting the installation. Adjustments should be made based on specific project requirements and client preferences. Contact implementation@goblueeye.com at any time with questions.

Speaker Installation Requirements

| Action | Requirements | Notes |
|---|--|-------|
| Determine end-customer's preferred speaker installation locations | Be sure the speaker(s) will be installed near entrances or other specific areas such as intrusion points or near valuable equipment | |
| Confirm power availability for proposed speaker(s) locations | <p>Ensure each location has 48v of Power over Ethernet (POE)</p> <p>Verify that cable runs do not exceed 250 feet without a PoE injector</p> <p>Consider alternative solutions, such as point-to-point radio systems, if necessary</p> | |

Camera Monitoring Specifications

| Action | Requirements | Notes |
|---|---|-------|
| Work with the end-customer to determine which cameras will be monitored | Confirm the number of cameras to be monitored as this will inform monthly service cost | |
| Obtain login credentials for NVR, DVR and/or cameras | <p>Document the login credentials</p> <p>If login credentials are unavailable, you may need to initiate a factory reset</p> | |

Networking and Server Connectivity

| Action | Requirements | Notes |
|--|---|-------|
| Confirm power availability for proposed speaker(s) locations | <p>Blue Eye's server needs to be able to communicate with the speaker(s), NVR/DVR and/or cameras to work</p> <p>Coordinate with end-customer's IT team to determine what port on the route/switch they'd like equipment plugged into</p> <p>On the actual day of installation, consider bringing an extra 8-port unmanaged PoE switch in case there are limited ports on the end-customer's equipment</p> | |

Documentation

| Action | Requirements | Notes |
|------------------------------|--|-------|
| Document key project details | <p>Capture images of network equipment and installation locations</p> <p>Create a basic site map indicating speaker and camera locations (SEE PAGE 2 FOR EXAMPLES)</p> <p>Label server, speaker and NVR/cameras that are monitored cameras. This is important for any post-installation maintenance or troubleshooting</p> | |

Post-Site Walkthrough

| Action | Requirements | Notes |
|---|---|-------|
| Schedule installation and share documentation | <p>Send potential installation dates and times in email titled "Installation Dates and Times for 'Site Name'" to implementation@goblueeye.com to ensure assigned Project Manager is available</p> <p>Send documentation captured in prior section in email titled "Pre-Install Documentation for 'Site Name'" to implementation@goblueeye.com</p> | |

As referenced in the "Documentation" section of the Pre-Installation Site Audit Checklist, after you conduct site walkthrough, please return to Blue Eye a basic map of the property outlining where speaker(s) and camera(s) will be located.

Providing a basic site map accomplishes the following:

- Ensures Blue Eye can be precise in addressing future maintenance requests
- Provides greater context of the property to Video Surveillance Technicians engaging with possible trespassers
- Gives Video Surveillance Technicians the ability to help guide police or private dispatch around the property

Please be sure to label monitored cameras on your map with either the channel name, IP address or customized camera name (e.g. "Gate Camera", "Dumpster Camera, etc.)

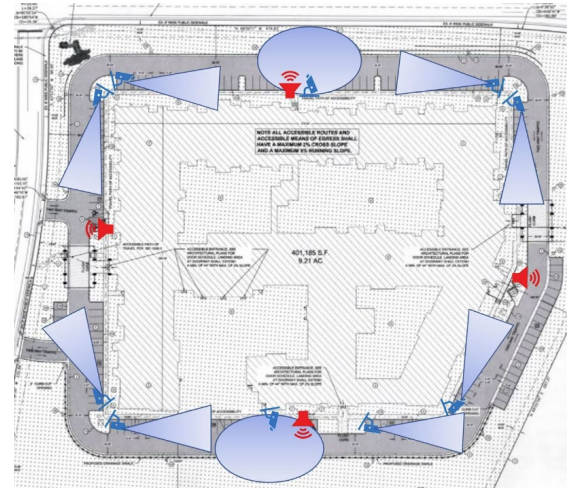
Site Map Example 1



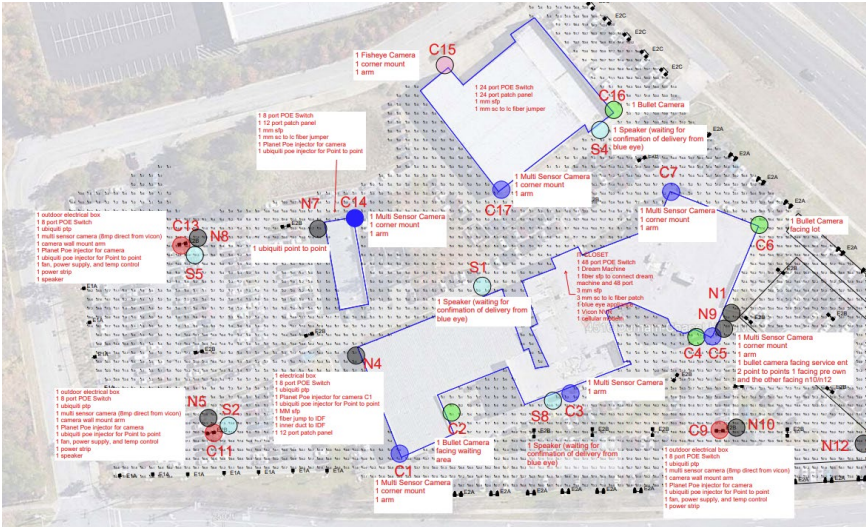
Site Map Example 2



Site Map Example 3



Site Map Example 4



Site Map Example 5

